

DualFlow Scale Control Systems

Calcium scale in pipes and plumbing equipment often increases energy costs and can lead to expensive repairs to appliances such as hot water heaters, ice machines, coffee makers, and dishwashers. On the other hand, calcium is important to human health, and supplements are often recommended if this important mineral is totally reduced or absent from a person's diet.

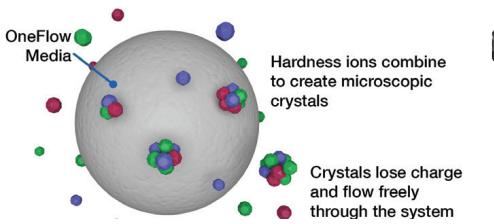
Water quality professionals now have a revolutionary product for fighting scale and retaining the benefits of calcium in water: DualFlow. With DualFlow there's no salt, no backwash, and no scale to worry about. This environmentally-friendly solution eliminates sodium discharge by using **Media-Assisted Crystallization (MAC)** technology.

Media-Assisted Crystallization (MAC) Technology

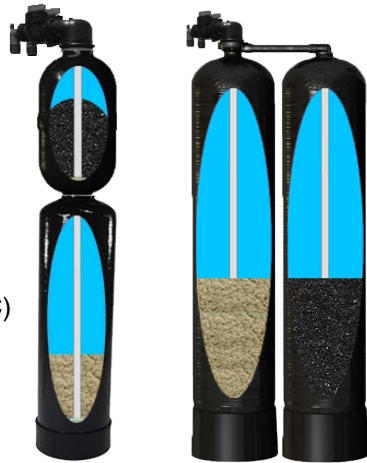
How does DualFlow MAC work?

DualFlow media attract dissolved calcium and magnesium ions near the surface of the media where they become supersaturated and converted into harmless microscopic crystals. Once formed, these crystals lose charge and flow freely through the plumbing system without causing damaging scale build-up in plumbing fixtures, water heating equipment, and appliances.

"Hard" water contains a high mineral content (primarily calcium and magnesium that naturally occur in groundwater). Over time, hard water can cause scale to build up in pipes and plumbing, increasing your energy costs and shortening the life of your appliances.



(IOVTT1017/35DC)



(IOHTT0948DC)

*Available in various sizes.
Inquire for more details

www.WRHCANADA.COM

WRH Distribution Inc.

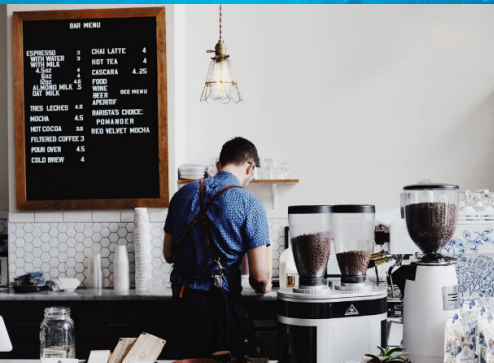
The Easy Solution for Chlorine and Scale Reduction for Commercial & Residential

DUALFLOW

No Maintenance Required
SALT-FREE CHLOR-DESCALER

Distributed by:

WRHCANADA.COM



At-A-Glance

- Proven scale control and chlorine remove performance tested by third-party laboratory data
- Requires no electricity
- Virtually maintenance free
- Compact, economical, and efficient
- No water waste: no backwashing and zero discharge.
- One system two usage: De-scaling and Chlorine remove
- No salt or chemical additives are needed
- DualFlow Residential systems do not remove minerals or add sodium to the water supply
- Long-lasting media needs no regeneration-replace on average once every 3 years
- Flow Rates: 8 GPM, 12 GPM 16 GPM

The intelligent scale solution

Obstructed pipes and poor water pressure. Crusty, spotty, hard-to-clean fixtures.

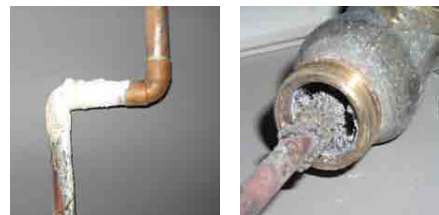
The scaly build-up in shower heads, dishwashers, laundry machines, vaporizers, water heaters and other costly equipment. Dingy, scratchy fabrics and clothing. Lifeless, difficult to manage, dull hair. There is nothing pleasant about hard water. Until now, the solution has been salt-based water softeners. Water softeners are bulky and require constant maintenance, costly salt additives, and wastewater during backwashing.



Hard-scale build-up on the plumbing system.

A compact, environmentally-friendly way to eliminate hard water scale in your home. with virtually no maintenance.

DualFlow is an intelligent anti-scale and chlorine remove system that requires no electricity, no salt, no backwashing, and a small space-saving footprint. Not to mention it has the ability to remove chlorine, to give you a better smell and taste water. More importantly, it does not put problematic brines into the water supply. And, it is maintenance-free, just replace the media once every 3 years and you can forget you ever had hard water and bad odor and taste water.



DID YOU KNOW?

Independent scientific testing has confirmed that MAC technology provides scale reduction of over 95%.

The Problem!

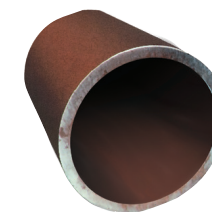
Calcium creates scale in pipes, on appliances and other plumbing surfaces which can lead to higher heating and energy costs and expensive repairs.



Untreated Pipe

The Solution!!

DualFlow Anti-Scale Systems transform dissolved hardness minerals into harmless, inactive microscopic crystal particles which are so small they are easily rinsed away by the water flow.



DualFlow Treated Pipe